

WHY SHOULD ORGANIZATIONS CARE ABOUT EARTHQUAKE RISK?

Most of the United States is at some risk for earthquakes, and it is important that organizations (businesses, community groups, associations, etc.) understand the potential impacts. Developing a Preparedness and Mitigation Project Plan and taking action protects employees, customers, and business continuity.



NATURAL DISASTER IMPACT

IMMEDIATE	ONE YEAR LATER	THREE YEARS LATER
40% OF SMALL BUSINESSES WON'T REOPEN	25% MORE SMALL BUSINESSES WILL CLOSE	75% OF BUSINESSES WITHOUT A CONTINUITY PLAN WILL FAIL

THE AVERAGE DAILY LOSS OF A BUSINESS THAT CLOSES DUE TO DISASTER

\$3,000 SMALL BUSINESS	\$23,000 MEDIUM-SIZED BUSINESS
----------------------------------	--

WHY IS THIS IMPORTANT?

SMALL BUSINESSES

ACCOUNT FOR 99% OF ALL COMPANIES	EMPLOY 50% OF ALL PRIVATE SECTOR EMPLOYEES
---	--

Source: 2014 data from the Federal Emergency Management Agency (FEMA) and US Department of Labor.



Reducing the Risks of Nonstructural Earthquake Damage – A Practical Guide

FEMA E-74 / December 2012

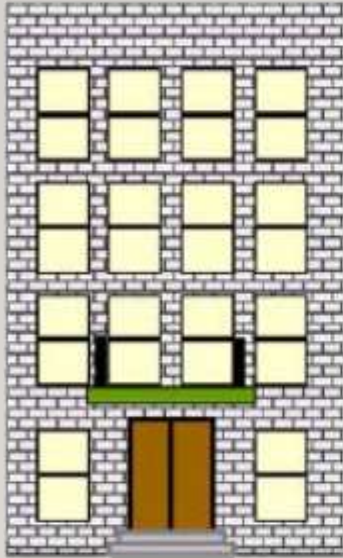


WHAT DO I HAVE TO DO?

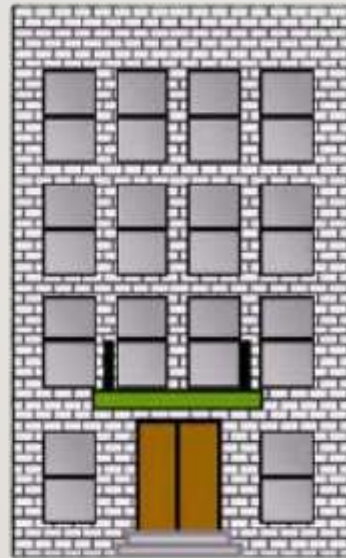


WHY ARE MOST BUILDINGS LIKE CAR SEATS?

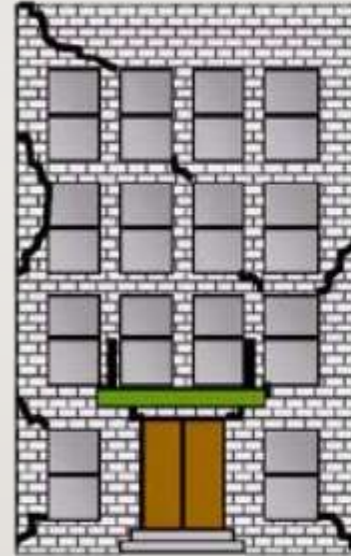




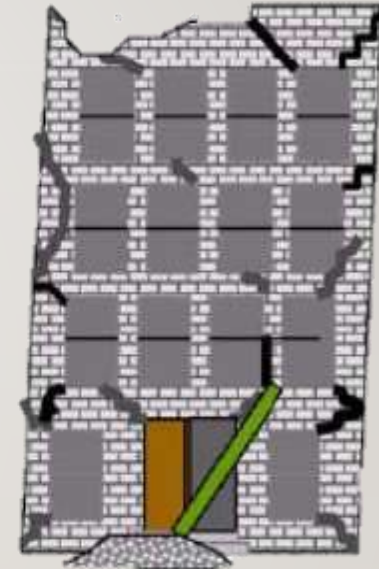
Operational



**Immediate
Occupancy**



Life Safety



**Collapse
Prevention**

Source: Sandeep Shah, Miyamoto

NON-STRUCTURAL ANCHORAGE

STRUCTURAL DESIGN

1. When it can be demonstrated that suitable development of the foundation and supporting non-structural construction will not result in a local overstress or other violation of the structure.

2. Where seismic force is design system consists of light (small) walls shall share equally unless the engineer manifestly specifies the use of higher design loads.

When the construction of the masonry retaining member is by the cast-in-place concrete method or the masonry unit method, reference to considering seismic anchorage by Section 11.11.9 of ASCE 7 may be used.

Where masonry is shown to be critical at the base of the superstructure system, the column and lateral displacement of the foundation or wall or slab-on-grade or the superstructure-in-place concrete shall be checked for flexure and axial deformation compatibility analysis.

TABLE 11.4.1.1. Section 11.4.1.1. (ADDITION 1) & 11.4.1.1.1.1.1. (ADDITION 2) OF ASCE 7

All nonstructural components shall have a component importance factor, I_p , equal to 1.5.

Exception: For nonseismic critical systems on seismic performance buildings and providing services to critical systems, or occupancies in general where the building is designated as SBC 3 or higher in accordance with Section 6 of the California Seismicity Code, and is permitted to use component importance factor, I_p , as shown in Table 11.4.1.1.

TABLE 11.4.1.1.1. COMPONENT IMPORTANCE FACTOR (I_p) FOR NONSEISMIC CRITICAL SERVICE AND CRITICAL PERFORMANCE BUILDINGS

DESCRIPTION	IMPORTANCE FACTOR (I _p)
Structural components	1.5
Mechanical and electrical components	2.0
Plumbing	2.0
Piping, including fire line components	2.5
AV/AC lines, including fire line components	2.5
Structural members	2.5

1. Component system for fire alarm, process gas or detection, including structure and systems that systems, detection, alarm, control, transfer, fire protection transfer control, fire alarm control panels, and alarm systems, shall have a component importance factor of 2.5.

TABLE 11.4.1.1.2. Section 11.4.1.2. (ADDITION 1), Section 11.4.1.2.1. & 11.4.1.2.2. OF ASCE 7

11.4.1.2.1. *Exception:* The following nonstructural components are exempt from the requirements of 11.4.1.2.1.

- Temporary bracing subject to analysis as noted in ASCE 7-16.
- Temporary or secondary structural equipment.

Exception:

1. Equipment shall be anchored if it is permanently attached to the building utility services such as elevators, gas or water. For the purposes of the requirements previously indicated, shall include all structural connections except piping for electric distribution.

2. The equipment shall be protected as required by ASCE 7-16, Section 11.4.1.2.2.1.1. for equipment that is located in a seismic zone and is not located in a seismic zone.

3. Anchorage, method and material compliance is defined in ASCE 7-16, Section 11.4.1.2.2.2.1.1.1. where all of the following apply:

- The equipment is permanently attached to the structure.
- Feasible connections are provided at seismic separation joints and between the equipment and associated structural, piping and conductive lines.
- The component weight 400 pounds (180 kg) or less and not in contact with horizontal floor slabs or walls above the anchors (that are not used for directly support the component).

Exception: Special Seismic Classification requirements of ASCE 7 code in accordance with Section 11.4.1.2.2.2.1.1. shall be applicable.

4. The component weight 20 pounds (90.7 N) or less in the case of a structural system.

Exception: The equipment shall be permitted to require anchorage for equipment with high seismic content to be shown on construction documents irrespective of weight.

TABLE 11.4.1.2.1. Section 11.4.1.2.1. (ADDITION 1), Section 11.4.1.2.1.1. & 11.4.1.2.1.2. OF ASCE 7

11.4.1.2.1.1. *Exception:* Nonstructural anchors and special fasteners in concrete and masonry.

Non-structural anchors and special fasteners in concrete that are prequalified for seismic applications in accordance with ACI 308.4E, ACI 308.4F, ACI 308.4G, ACI 308.4H, ACI 308.4I, ACI 308.4J, ACI 308.4K, ACI 308.4L, ACI 308.4M, ACI 308.4N, ACI 308.4O, ACI 308.4P, ACI 308.4Q, ACI 308.4R, ACI 308.4S, ACI 308.4T, ACI 308.4U, ACI 308.4V, ACI 308.4W, ACI 308.4X, ACI 308.4Y, ACI 308.4Z, ACI 308.4AA, ACI 308.4AB, ACI 308.4AC, ACI 308.4AD, ACI 308.4AE, ACI 308.4AF, ACI 308.4AG, ACI 308.4AH, ACI 308.4AI, ACI 308.4AJ, ACI 308.4AK, ACI 308.4AL, ACI 308.4AM, ACI 308.4AN, ACI 308.4AO, ACI 308.4AP, ACI 308.4AQ, ACI 308.4AR, ACI 308.4AS, ACI 308.4AT, ACI 308.4AU, ACI 308.4AV, ACI 308.4AW, ACI 308.4AX, ACI 308.4AY, ACI 308.4AZ, ACI 308.4BA, ACI 308.4BB, ACI 308.4BC, ACI 308.4BD, ACI 308.4BE, ACI 308.4BF, ACI 308.4BG, ACI 308.4BH, ACI 308.4BI, ACI 308.4BJ, ACI 308.4BK, ACI 308.4BL, ACI 308.4BM, ACI 308.4BN, ACI 308.4BO, ACI 308.4BP, ACI 308.4BQ, ACI 308.4BR, ACI 308.4BS, ACI 308.4BT, ACI 308.4BU, ACI 308.4BV, ACI 308.4BW, ACI 308.4BX, ACI 308.4BY, ACI 308.4BZ, ACI 308.4CA, ACI 308.4CB, ACI 308.4CC, ACI 308.4CD, ACI 308.4CE, ACI 308.4CF, ACI 308.4CG, ACI 308.4CH, ACI 308.4CI, ACI 308.4CJ, ACI 308.4CK, ACI 308.4CL, ACI 308.4CM, ACI 308.4CN, ACI 308.4CO, ACI 308.4CP, ACI 308.4CQ, ACI 308.4CR, ACI 308.4CS, ACI 308.4CT, ACI 308.4CU, ACI 308.4CV, ACI 308.4CW, ACI 308.4CX, ACI 308.4CY, ACI 308.4CZ, ACI 308.4DA, ACI 308.4DB, ACI 308.4DC, ACI 308.4DD, ACI 308.4DE, ACI 308.4DF, ACI 308.4DG, ACI 308.4DH, ACI 308.4DI, ACI 308.4DJ, ACI 308.4DK, ACI 308.4DL, ACI 308.4DM, ACI 308.4DN, ACI 308.4DO, ACI 308.4DP, ACI 308.4DQ, ACI 308.4DR, ACI 308.4DS, ACI 308.4DT, ACI 308.4DU, ACI 308.4DV, ACI 308.4DW, ACI 308.4DX, ACI 308.4DY, ACI 308.4DZ, ACI 308.4EA, ACI 308.4EB, ACI 308.4EC, ACI 308.4ED, ACI 308.4EE, ACI 308.4EF, ACI 308.4EG, ACI 308.4EH, ACI 308.4EI, ACI 308.4EJ, ACI 308.4EK, ACI 308.4EL, ACI 308.4EM, ACI 308.4EN, ACI 308.4EO, ACI 308.4EP, ACI 308.4EQ, ACI 308.4ER, ACI 308.4ES, ACI 308.4ET, ACI 308.4EU, ACI 308.4EV, ACI 308.4EW, ACI 308.4EX, ACI 308.4EY, ACI 308.4EZ, ACI 308.4FA, ACI 308.4FB, ACI 308.4FC, ACI 308.4FD, ACI 308.4FE, ACI 308.4FF, ACI 308.4FG, ACI 308.4FH, ACI 308.4FI, ACI 308.4FJ, ACI 308.4FK, ACI 308.4FL, ACI 308.4FM, ACI 308.4FN, ACI 308.4FO, ACI 308.4FP, ACI 308.4FQ, ACI 308.4FR, ACI 308.4FS, ACI 308.4FT, ACI 308.4FU, ACI 308.4FV, ACI 308.4FW, ACI 308.4FX, ACI 308.4FY, ACI 308.4FZ, ACI 308.4GA, ACI 308.4GB, ACI 308.4GC, ACI 308.4GD, ACI 308.4GE, ACI 308.4GF, ACI 308.4GG, ACI 308.4GH, ACI 308.4GI, ACI 308.4GJ, ACI 308.4GK, ACI 308.4GL, ACI 308.4GM, ACI 308.4GN, ACI 308.4GO, ACI 308.4GP, ACI 308.4GQ, ACI 308.4GR, ACI 308.4GS, ACI 308.4GT, ACI 308.4GU, ACI 308.4GV, ACI 308.4GW, ACI 308.4GX, ACI 308.4GY, ACI 308.4GZ, ACI 308.4HA, ACI 308.4HB, ACI 308.4HC, ACI 308.4HD, ACI 308.4HE, ACI 308.4HF, ACI 308.4HG, ACI 308.4HH, ACI 308.4HI, ACI 308.4HJ, ACI 308.4HK, ACI 308.4HL, ACI 308.4HM, ACI 308.4HN, ACI 308.4HO, ACI 308.4HP, ACI 308.4HQ, ACI 308.4HR, ACI 308.4HS, ACI 308.4HT, ACI 308.4HU, ACI 308.4HV, ACI 308.4HW, ACI 308.4HX, ACI 308.4HY, ACI 308.4HZ, ACI 308.4IA, ACI 308.4IB, ACI 308.4IC, ACI 308.4ID, ACI 308.4IE, ACI 308.4IF, ACI 308.4IG, ACI 308.4IH, ACI 308.4II, ACI 308.4IJ, ACI 308.4IK, ACI 308.4IL, ACI 308.4IM, ACI 308.4IN, ACI 308.4IO, ACI 308.4IP, ACI 308.4IQ, ACI 308.4IR, ACI 308.4IS, ACI 308.4IT, ACI 308.4IU, ACI 308.4IV, ACI 308.4IW, ACI 308.4IX, ACI 308.4IY, ACI 308.4IZ, ACI 308.4JA, ACI 308.4JB, ACI 308.4JC, ACI 308.4JD, ACI 308.4JE, ACI 308.4JF, ACI 308.4JG, ACI 308.4JH, ACI 308.4JI, ACI 308.4JJ, ACI 308.4JK, ACI 308.4JL, ACI 308.4JM, ACI 308.4JN, ACI 308.4JO, ACI 308.4JP, ACI 308.4JQ, ACI 308.4JR, ACI 308.4JS, ACI 308.4JT, ACI 308.4JU, ACI 308.4JV, ACI 308.4JW, ACI 308.4JX, ACI 308.4JY, ACI 308.4JZ, ACI 308.4KA, ACI 308.4KB, ACI 308.4KC, ACI 308.4KD, ACI 308.4KE, ACI 308.4KF, ACI 308.4KG, ACI 308.4KH, ACI 308.4KI, ACI 308.4KJ, ACI 308.4KK, ACI 308.4KL, ACI 308.4KM, ACI 308.4KN, ACI 308.4KO, ACI 308.4KP, ACI 308.4KQ, ACI 308.4KR, ACI 308.4KS, ACI 308.4KT, ACI 308.4KU, ACI 308.4KV, ACI 308.4KW, ACI 308.4KX, ACI 308.4KY, ACI 308.4KZ, ACI 308.4LA, ACI 308.4LB, ACI 308.4LC, ACI 308.4LD, ACI 308.4LE, ACI 308.4LF, ACI 308.4LG, ACI 308.4LH, ACI 308.4LI, ACI 308.4LJ, ACI 308.4LK, ACI 308.4LL, ACI 308.4LM, ACI 308.4LN, ACI 308.4LO, ACI 308.4LP, ACI 308.4LQ, ACI 308.4LR, ACI 308.4LS, ACI 308.4LT, ACI 308.4LU, ACI 308.4LV, ACI 308.4LW, ACI 308.4LX, ACI 308.4LY, ACI 308.4LZ, ACI 308.4MA, ACI 308.4MB, ACI 308.4MC, ACI 308.4MD, ACI 308.4ME, ACI 308.4MF, ACI 308.4MG, ACI 308.4MH, ACI 308.4MI, ACI 308.4MJ, ACI 308.4MK, ACI 308.4ML, ACI 308.4MM, ACI 308.4MN, ACI 308.4MO, ACI 308.4MP, ACI 308.4MQ, ACI 308.4MR, ACI 308.4MS, ACI 308.4MT, ACI 308.4MU, ACI 308.4MV, ACI 308.4MW, ACI 308.4MX, ACI 308.4MY, ACI 308.4MZ, ACI 308.4NA, ACI 308.4NB, ACI 308.4NC, ACI 308.4ND, ACI 308.4NE, ACI 308.4NF, ACI 308.4NG, ACI 308.4NH, ACI 308.4NI, ACI 308.4NJ, ACI 308.4NK, ACI 308.4NL, ACI 308.4NM, ACI 308.4NN, ACI 308.4NO, ACI 308.4NP, ACI 308.4NQ, ACI 308.4NR, ACI 308.4NS, ACI 308.4NT, ACI 308.4NU, ACI 308.4NV, ACI 308.4NW, ACI 308.4NX, ACI 308.4NY, ACI 308.4NZ, ACI 308.4OA, ACI 308.4OB, ACI 308.4OC, ACI 308.4OD, ACI 308.4OE, ACI 308.4OF, ACI 308.4OG, ACI 308.4OH, ACI 308.4OI, ACI 308.4OJ, ACI 308.4OK, ACI 308.4OL, ACI 308.4OM, ACI 308.4ON, ACI 308.4OO, ACI 308.4OP, ACI 308.4OQ, ACI 308.4OR, ACI 308.4OS, ACI 308.4OT, ACI 308.4OU, ACI 308.4OV, ACI 308.4OW, ACI 308.4OX, ACI 308.4OY, ACI 308.4OZ, ACI 308.4PA, ACI 308.4PB, ACI 308.4PC, ACI 308.4PD, ACI 308.4PE, ACI 308.4PF, ACI 308.4PG, ACI 308.4PH, ACI 308.4PI, ACI 308.4PJ, ACI 308.4PK, ACI 308.4PL, ACI 308.4PM, ACI 308.4PN, ACI 308.4PO, ACI 308.4PP, ACI 308.4PQ, ACI 308.4PR, ACI 308.4PS, ACI 308.4PT, ACI 308.4PU, ACI 308.4PV, ACI 308.4PW, ACI 308.4PX, ACI 308.4PY, ACI 308.4PZ, ACI 308.4QA, ACI 308.4QB, ACI 308.4QC, ACI 308.4QD, ACI 308.4QE, ACI 308.4QF, ACI 308.4QG, ACI 308.4QH, ACI 308.4QI, ACI 308.4QJ, ACI 308.4QK, ACI 308.4QL, ACI 308.4QM, ACI 308.4QN, ACI 308.4QO, ACI 308.4QP, ACI 308.4QQ, ACI 308.4QR, ACI 308.4QS, ACI 308.4QT, ACI 308.4QU, ACI 308.4QV, ACI 308.4QW, ACI 308.4QX, ACI 308.4QY, ACI 308.4QZ, ACI 308.4RA, ACI 308.4RB, ACI 308.4RC, ACI 308.4RD, ACI 308.4RE, ACI 308.4RF, ACI 308.4RG, ACI 308.4RH, ACI 308.4RI, ACI 308.4RJ, ACI 308.4RK, ACI 308.4RL, ACI 308.4RM, ACI 308.4RN, ACI 308.4RO, ACI 308.4RP, ACI 308.4RQ, ACI 308.4RR, ACI 308.4RS, ACI 308.4RT, ACI 308.4RU, ACI 308.4RV, ACI 308.4RW, ACI 308.4RX, ACI 308.4RY, ACI 308.4RZ, ACI 308.4SA, ACI 308.4SB, ACI 308.4SC, ACI 308.4SD, ACI 308.4SE, ACI 308.4SF, ACI 308.4SG, ACI 308.4SH, ACI 308.4SI, ACI 308.4SJ, ACI 308.4SK, ACI 308.4SL, ACI 308.4SM, ACI 308.4SN, ACI 308.4SO, ACI 308.4SP, ACI 308.4SQ, ACI 308.4SR, ACI 308.4SS, ACI 308.4ST, ACI 308.4SU, ACI 308.4SV, ACI 308.4SW, ACI 308.4SX, ACI 308.4SY, ACI 308.4SZ, ACI 308.4TA, ACI 308.4TB, ACI 308.4TC, ACI 308.4TD, ACI 308.4TE, ACI 308.4TF, ACI 308.4TG, ACI 308.4TH, ACI 308.4TI, ACI 308.4TJ, ACI 308.4TK, ACI 308.4TL, ACI 308.4TM, ACI 308.4TN, ACI 308.4TO, ACI 308.4TP, ACI 308.4TQ, ACI 308.4TR, ACI 308.4TS, ACI 308.4TT, ACI 308.4TU, ACI 308.4TV, ACI 308.4TW, ACI 308.4TX, ACI 308.4TY, ACI 308.4TZ, ACI 308.4UA, ACI 308.4UB, ACI 308.4UC, ACI 308.4UD, ACI 308.4UE, ACI 308.4UF, ACI 308.4UG, ACI 308.4UH, ACI 308.4UI, ACI 308.4UJ, ACI 308.4UK, ACI 308.4UL, ACI 308.4UM, ACI 308.4UN, ACI 308.4UO, ACI 308.4UP, ACI 308.4UQ, ACI 308.4UR, ACI 308.4US, ACI 308.4UT, ACI 308.4UU, ACI 308.4UV, ACI 308.4UW, ACI 308.4UX, ACI 308.4UY, ACI 308.4UZ, ACI 308.4VA, ACI 308.4VB, ACI 308.4VC, ACI 308.4VD, ACI 308.4VE, ACI 308.4VF, ACI 308.4VG, ACI 308.4VH, ACI 308.4VI, ACI 308.4VJ, ACI 308.4VK, ACI 308.4VL, ACI 308.4VM, ACI 308.4VN, ACI 308.4VO, ACI 308.4VP, ACI 308.4VQ, ACI 308.4VR, ACI 308.4VS, ACI 308.4VT, ACI 308.4VU, ACI 308.4VV, ACI 308.4VW, ACI 308.4VX, ACI 308.4VY, ACI 308.4VZ, ACI 308.4WA, ACI 308.4WB, ACI 308.4WC, ACI 308.4WD, ACI 308.4WE, ACI 308.4WF, ACI 308.4WG, ACI 308.4WH, ACI 308.4WI, ACI 308.4WJ, ACI 308.4WK, ACI 308.4WL, ACI 308.4WM, ACI 308.4WN, ACI 308.4WO, ACI 308.4WP, ACI 308.4WQ, ACI 308.4WR, ACI 308.4WS, ACI 308.4WT, ACI 308.4WU, ACI 308.4WV, ACI 308.4WW, ACI 308.4WX, ACI 308.4WY, ACI 308.4WZ, ACI 308.4XA, ACI 308.4XB, ACI 308.4XC, ACI 308.4XD, ACI 308.4XE, ACI 308.4XF, ACI 308.4XG, ACI 308.4XH, ACI 308.4XI, ACI 308.4XJ, ACI 308.4XK, ACI 308.4XL, ACI 308.4XM, ACI 308.4XN, ACI 308.4XO, ACI 308.4XP, ACI 308.4XQ, ACI 308.4XR, ACI 308.4XS, ACI 308.4XT, ACI 308.4XU, ACI 308.4XV, ACI 308.4XW, ACI 308.4XX, ACI 308.4XY, ACI 308.4XZ, ACI 308.4YA, ACI 308.4YB, ACI 308.4YC, ACI 308.4YD, ACI 308.4YE, ACI 308.4YF, ACI 308.4YG, ACI 308.4YH, ACI 308.4YI, ACI 308.4YJ, ACI 308.4YK, ACI 308.4YL, ACI 308.4YM, ACI 308.4YN, ACI 308.4YO, ACI 308.4YP, ACI 308.4YQ, ACI 308.4YR, ACI 308.4YS, ACI 308.4YT, ACI 308.4YU, ACI 308.4YV, ACI 308.4YW, ACI 308.4YX, ACI 308.4YY, ACI 308.4YZ, ACI 308.4ZA, ACI 308.4ZB, ACI 308.4ZC, ACI 308.4ZD, ACI 308.4ZE, ACI 308.4ZG, ACI 308.4ZH, ACI 308.4ZI, ACI 308.4ZJ, ACI 308.4ZK, ACI 308.4ZL, ACI 308.4ZM, ACI 308.4ZN, ACI 308.4ZO, ACI 308.4ZP, ACI 308.4ZQ, ACI 308.4ZR, ACI 308.4ZS, ACI 308.4ZT, ACI 308.4ZU, ACI 308.4ZV, ACI 308.4ZW, ACI 308.4ZX, ACI 308.4ZY, ACI 308.4ZZ

THE FINE PRINT—CALIFORNIA BUILDING CODE

The enforcement agency shall be permitted to require temporary attachments for movable equipment which is usually stationed in one place and heavier than 400 pounds or has a center of mass located 4 feet (1 .22 m) or more above the adjacent floor...

DR. LUCY JONES

“Instead of just ‘crawl out alive,’ make a building that you can reuse,” Jones told [KIRO Radio’s Dave Ross](#).

“Engineers know how to do it. We haven’t been willing to spend the money. Turns out the extra money is about 1 percent of construction costs.”

**CENTER OF GRAVITY 4'
AT LEAST 400 LBS.**



SAFE-T-PROOF™



**Safe-T-Proof offers the
#1 earthquake fastening
system in the USA
Go to www.Safe-T-Proof.com
for more information.**

SAFE-T-PROOF DISASTER PREPAREDNESS CO., INC. • 800.377.8888 • WWW.SAFE-T-PROOF.COM

SAN FRANCISCO • LOS ANGELES • SAN DIEGO













2 | Develop A Plan: SPACE

These are nonstructural mitigation activities that can be completed by someone with common tools and readily available materials. However, this list does not include all activities. For additional guidance on nonstructural risks, please see the Quick Reference Guide (QRG) to this program.

By performing all applicable Do-It Yourself (DIY) activities, organizations will be eligible for recognition as "Qualified" SPACE Program Community Member.

NONSTRUCTURAL RISK	MITIGATION SOLUTION	ASSIGNED TO	BUDGET	COMPLETION DATE
DO-IT-YOURSELF				
Computers	Strip or lock with monitor strap to desk, lock desktop to desk			
Tall Shelving	Attach to wall with brackets or bolted beams			
Library Shelves	Secure to floor, install grommets for books			
Tall File Cabinets	Secure to wall, install cabinet anchors to drawers			
Drawers and Cabinets	Install brackets to shelves and cabinets			
Compressed Gas Cylinders	Attach to wall with chains or braces			
Hazardous Materials	Remove from business area			
Fragile Artwork	Secure to walls with corner and to tables with padding			
Fireproofing Half-Height Partitions	Secure/Secure to floor			
Shelfless Furniture/ Tables	Fasten/Secure ceiling fans and lights with safety cables			

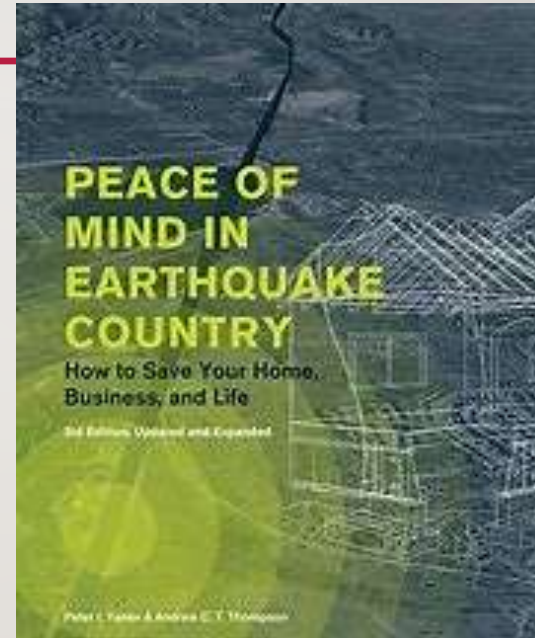
**TALL CABINETS SECURED TO WALL STUDS:
\$20 PARTS \$50 INSTALLATION**

**EARTHQUAKE-ACTIVATED CABINET LATCHES
\$5 \$10 INSTALLATION**

RESOURCES



QUAKESMARTCOMMUNITY.ORG



AUTHOR:
PETER YANEV

GLEN GRANHOLM
SAFE-T-PROOF 800-377-8888
gg@safe-t-proof.com